

FOR IMMEDIATE RELEASE

Betty Segrest, **MCCRANEY COTTLE ARTS COUNCIL**, 334-329-9318 | E-mail: BettySegrest@gmail.com

Mark Harris, **DIXIE ART COLONY FOUNDATION**, 334-328-0730 | E-mail: M.Harris@DixieArtColony.org

Shirley Esco, **ELMORE COUNTY ART GUILD**, 334-399-5115 | E-mail: ShirleyEsco1945@gmail.com

April 01, 2017

Tallassee NOW Art Exhibitions to be Held in June 2017

McCraney Cottle Arts Council / Dixie Art Colony Foundation / Elmore County Art Guild

Tallassee, Alabama—Four exciting art exhibitions will take place during this year's annual **Tallassee NOW** event to be held on **June 9 and 10, 2017 in downtown Tallassee, Alabama. All four art exhibitions will take place at the 304 Barnett Boulevard branch of Trustmark located just west of the Fitzpatrick Bridge.** The exhibitions will open on Friday, June 9 at 6:00 pm with an **opening reception** in the banking lobby of Trustmark. All of the exhibitions will also be open from 10:00 am until 2:00 pm on Saturday, June 10.

• **Dixie Art Colony a Look at its Lasting Legacy** | This exhibit will take place in the main banking lobby of the downtown branch of Trustmark. The centerpiece of this exhibition will be four large, oversized murals designed and painted by well-known Elmore County artist Kelly Fitzpatrick and his protégé Arthur Stewart. The three larger murals measure 14 feet in length. The murals commissioned in 1952 by Bank of Tallassee president Roberts Blount depict important milestones in the history of the city of Tallassee. Also included in this exhibition will be other original artwork by Dixie Art Colony artists Kelly Fitzpatrick, Arthur Stewart, Warree LeBron, Carlos Alpha "Shiney" Moon, Genevieve Southerland, Walter Keith, Karl Ferdinand Wolfe, Mildred Nungester Wolfe, Anne Wilson Goldthwaite, Louise Smith Everton and more. The Dixie Art Colony first met in 1933 at the site of Cherokee Bluffs on Lake Martin. In 1937, the Dixie Art Colony settled at a permanent location in the Deatsville area of Lake Jordan known as Nobles Ferry. Family members of some of the colonists are expected to attend the reception.

The exhibition will also include a 16-minute documentary-style video about Elmore County's unique and historic Dixie Art Colony and the influence it had on the development of Southern Art during the 1930s, 1940s and 1950s. Included in the video are vintage photographs taken from the Colony Scrapbooks. The DAC Foundation has documentation indicating that more 137 artists participated in the colony from 1933 through 1947.

This exhibit will be open June 9 from 6:00 pm until 7:30 pm and June 10 from 10:00 am until 2:00 pm. For more information about the Dixie Art Colony visit: DixieArtColony.org

FOR IMMEDIATE RELEASE

April 01, 2017

Tallassee NOW Art Exhibitions to be Held in June 2017

McCraney Cottle Arts Council / Dixie Art Colony Foundation / Elmore County Art Guild

- **Tallassee Community: Art Show** | This exhibit conducted by the McCraney Cottle Arts Council will take place in the bank annex located on the east side of the downtown branch of Trustmark. The exhibit will feature Tallassee area artist. No fees will be charged to enter and all mediums will be accepted.

This exhibit will be open June 9 from 6:00 pm until 7:30 pm and June 10 from 10:00 am until 2:00 pm. For more information about the McCraney Cottle Arts Council them on Facebook.

- **Dixie Doodles: The Lighter Side of the Dixie Art Colony** | This exhibit will take place in the bank Annex located on the east side of the downtown branch of Trustmark. The highlight of this exhibition will be a series of painted tin panels rescued from the Nobles Ferry site of the Dixie Art Colony. The panels show playful scenes painted by Arthur Stewart, Warree LeBron, Mildred Nungester (Wolfe) and numerous others. Also included in this exhibit will be a series of caricature type sketches of some of the colonists, silkscreens, watercolors sketches, and pencil sketches by Richard Coe, Austin (Rudy) Martin, Frank Applebee and Kelly Fitzpatrick.

This exhibit will be open June 9 from 6:00 pm until 7:30 pm and June 10, 14, 17 from 10:00 am until 2:00 pm. For more information about the Dixie Art Colony visit: DixieArtColony.org

- **Tallassee Now & Then: Art Show** | This exhibit conducted by the Elmore County Art Guild will take place in the bank Annex located on the east side of the downtown branch of Trustmark. The theme, "Tallassee Now & Then," encourages artists to focus on historical scenes of Tallassee's past and scenes that represent present day Tallassee. First, Second and Third Place awards and numerous Honorable Mentions will be awarded at the reception to be held on June 9 from 6:00 pm until 7:30 pm. Up to three entries per artist will be accepted. The competition is open to all artists 18 years of age and older. Both Elmore County Art Guild members and non-members are invited to participate. Up to three entries per artist will be accepted. ECAG members will be charged a \$5.00 fee for each entry. Non-members will be charged a \$15 fee for each entry. Work must delivered to the Trustmark Annex no later than 1:30 pm on May 3.

This exhibit will be open June 9 from 6:00 pm until 7:30 pm and June 10, 14, 17 from 10:00 am until 2:00 pm. To enter the competition, visit the Elmore County Art Guild Facebook page or website at: ElmoreCountyArtGuild.com

FOR IMMEDIATE RELEASE

April 01, 2017

Tallassee NOW Art Exhibitions to be Held in June 2017

McCraney Cottle Arts Council / Dixie Art Colony Foundation / Elmore County Art Guild

On Saturday, June 10 several local artists will be on site demonstrating their craft. **For more information about Tallassee NOW, visit: TallasseeNOW.com.** The Dixie Art Colony Foundation, Elmore County Art Guild, and the McCraney Cottle Arts Council are all non-profit corporations incorporated in Elmore County, Alabama. Donations to the DAC Foundation and the Elmore County Art Guild and the McCraney Cottle Arts Council are tax-deductible. For more information about the Dixie Art Colony Foundation visit: DixieArtColony.org. For more information about the Elmore County Art Guild visit: [Elmore CountyArtGuild.com](http://ElmoreCountyArtGuild.com).

Sponsors for the exhibitions include Trustmark bank and the McCraney Cottle Arts Council.

###

FOR IMMEDIATE RELEASE

April 01, 2017

Tallassee NOW Art Exhibitions to be Held in June 2017

McCraney Cottle Arts Council / Dixie Art Colony Foundation / Elmore County Art Guild

High-resolution digital images and captions for the following photographs are available for use. Send image requests to M.Harris@DixieArtColony.org. DAC Foundation and Elmore County Art Guild logos are also available upon request.



Cherokee Bluffs 1-AP



Springlake 2-AP



Nobles Ferry 3-AP



Nobles Ferry 4-AP



Nobles Ferry 5-AP

FOR IMMEDIATE RELEASE

April 01, 2017

Tallassee NOW Art Exhibitions to be Held in June 2017

McCraney Cottle Arts Council / Dixie Art Colony Foundation / Elmore County Art Guild

High-resolution digital images and captions for the following photographs are available for use. Send image requests to M.Harris@DixieArtColony.org. DAC Foundation and Elmore County Art Guild logos are also available upon request.



Arthur Stewart 6-AP



Deatsville Train Depot 7-AP



Shiney Moon 8-AP



Karl Wolfe 9-AP

FOR IMMEDIATE RELEASE

April 01, 2017

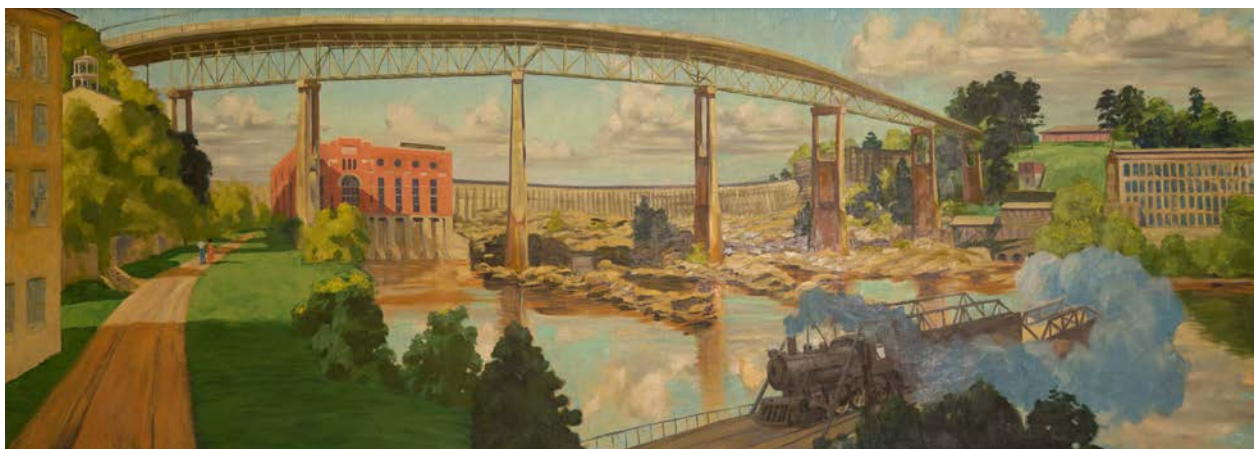
Tallassee NOW Art Exhibitions to be Held in June 2017

McCraney Cottle Arts Council / Dixie Art Colony Foundation / Elmore County Art Guild

High-resolution digital images and captions for the following photographs are available for use. Send image requests to M.Harris@DixieArtColony.org. DAC Foundation and Elmore County Art Guild logos are also available upon request.



Kelly Fitzpatrick / Arthur Stewart: Tallassee Cotton Gins, 1-Art



Kelly Fitzpatrick / Arthur Stewart: Tallassee's Fitzpatrick Bridge, 2-Art

FOR IMMEDIATE RELEASE

April 01, 2017

Tallassee NOW Art Exhibitions to be Held in June 2017

McCraney Cottle Arts Council / Dixie Art Colony Foundation / Elmore County Art Guild

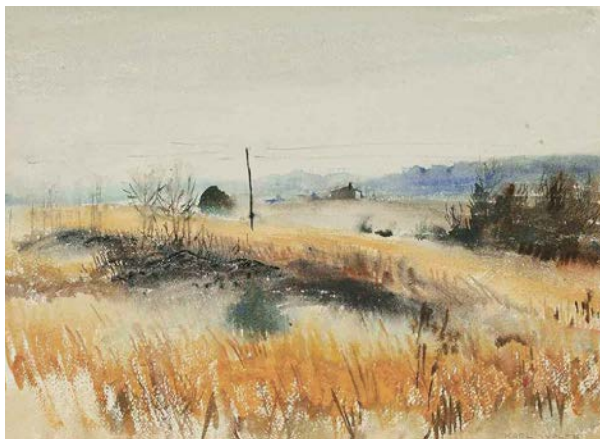
High-resolution digital images and captions for the following photographs are available for use. Send image requests to M.Harris@DixieArtColony.org. DAC Foundation and Elmore County Art Guild logos are also available upon request.



Arthur Stewart 3-Art



Genevieve Southerland 4-Art



Karl Wolfe 5-Art



Warree LeBron 6-Art

FOR IMMEDIATE RELEASE

April 01, 2017

Tallassee NOW Art Exhibitions to be Held in June 2017

McCraney Cottle Arts Council / Dixie Art Colony Foundation / Elmore County Art Guild

High-resolution digital images and captions for the following photographs are available for use. Send image requests to M.Harris@DixieArtColony.org. DAC Foundation and Elmore County Art Guild logos are also available upon request.



Arthur Stewart 7-Art



Arthur Stewart 8-Art



Kelly Fitzpatrick 9-Art



Arthur Stewart 10-Art



Kelly Fitzpatrick 11-A